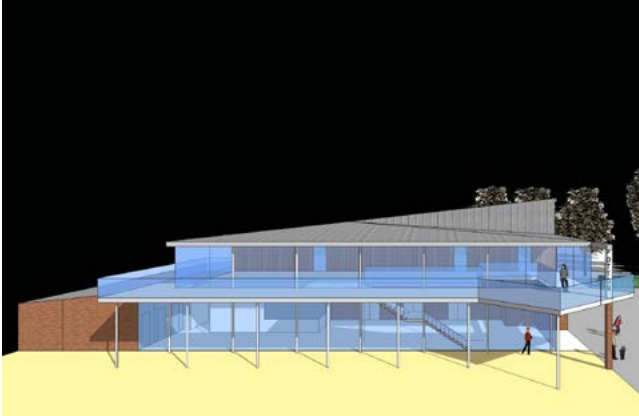


Location: **Potton, Central Bedfordshire**
 Budget: **£1.5m est.**
 Date: **2015~**
 Status: **Seeking funding**

Potton Hall for All

for PottonParish Council



civic have developed a series of 3 dimensional models in order to test the viability and extent to which a new community centre would be feasible as a single or 2 storey building. The models are borne out of detailed analysis of the community needs and aspirations coupled with our experience in assembling building functions that sustain continued revenue and use for rural communities such as Potton.

Our outline scheme sits within a large scale development at the edge of the town, and relates to new residential and existing sports and leisure spaces on the southern edge of Potton. The client group are currently applying for funding in order to progress the scheme.

