

Location: London
Budget: Competition
Date: December 2013

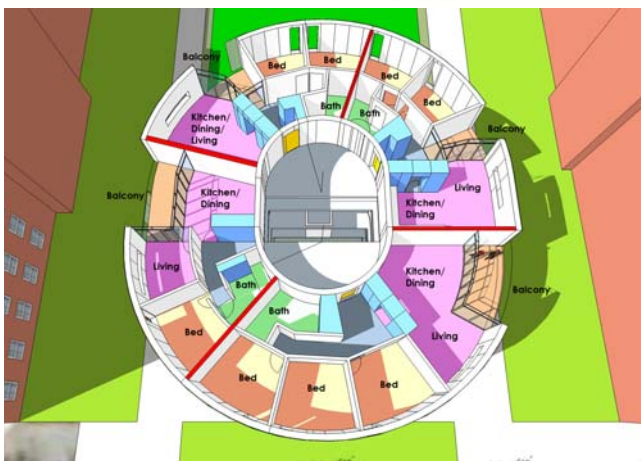
Peabody Housing Trust

Small Projects Panel



A design for a housing block that could be inserted within existing estate plans to maximise the visual and physical use of the ground floor - in this case making links through to a landscaped courtyard and sports provision. The building plan floats above a sheltered urban space where residents can create safe playspaces, store bicycles and create a shared threshold space between the privacy of their flats and the streetscape.

Each floor comprises a mix of flat types - from 1 bed 2 person flats to 3b 6 person flats. Every flat has a generous balcony that connects directly to the main living and dining rooms and creates an outdoor room.



The cladding for the building is a colourful device to contrast with the overwhelming brick built context and would be tailored in material and colour to each site where the scheme is developed - depending on the surrounding context. The metallic aluminium cladding was chosen in this competition entry to create a 'jewel-like' set piece within the otherwise matt environment.

Inspired by Dutch and Danish housing models we proposed a climbing wall and active landscape space here to reflect the former youth club on the site and sustain the idea of a local pocket park.

London
142 Wood Vale, London, SE23 3EB.
Edinburgh
28 Lee Crescent, Portobello, Edinburgh, EH15 1LW.

civic Architects Ltd
www.civic.org.uk
e: office@civic.org.uk